

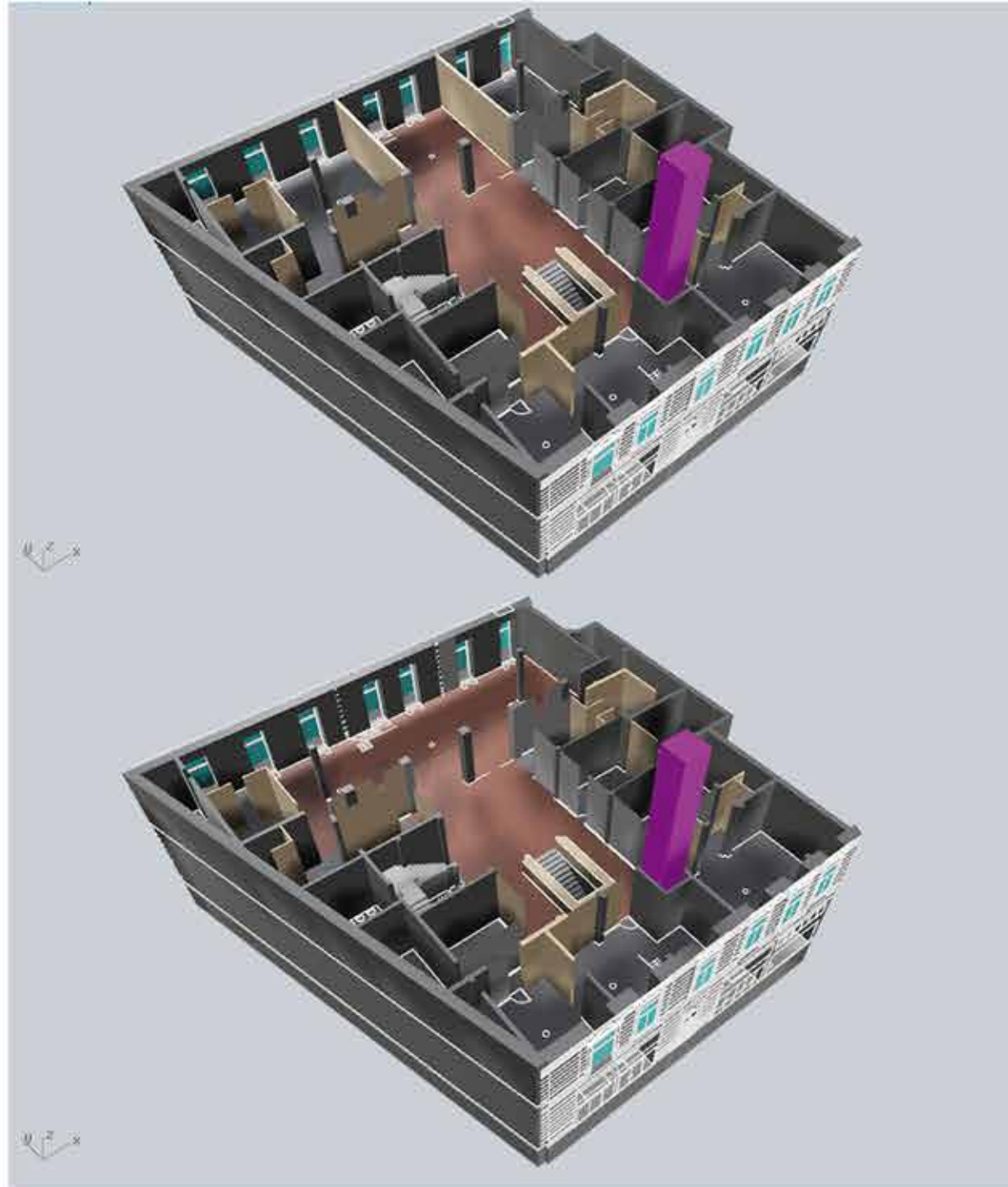
Info. foso del ascensor:

Volumen foso: 53Mt3

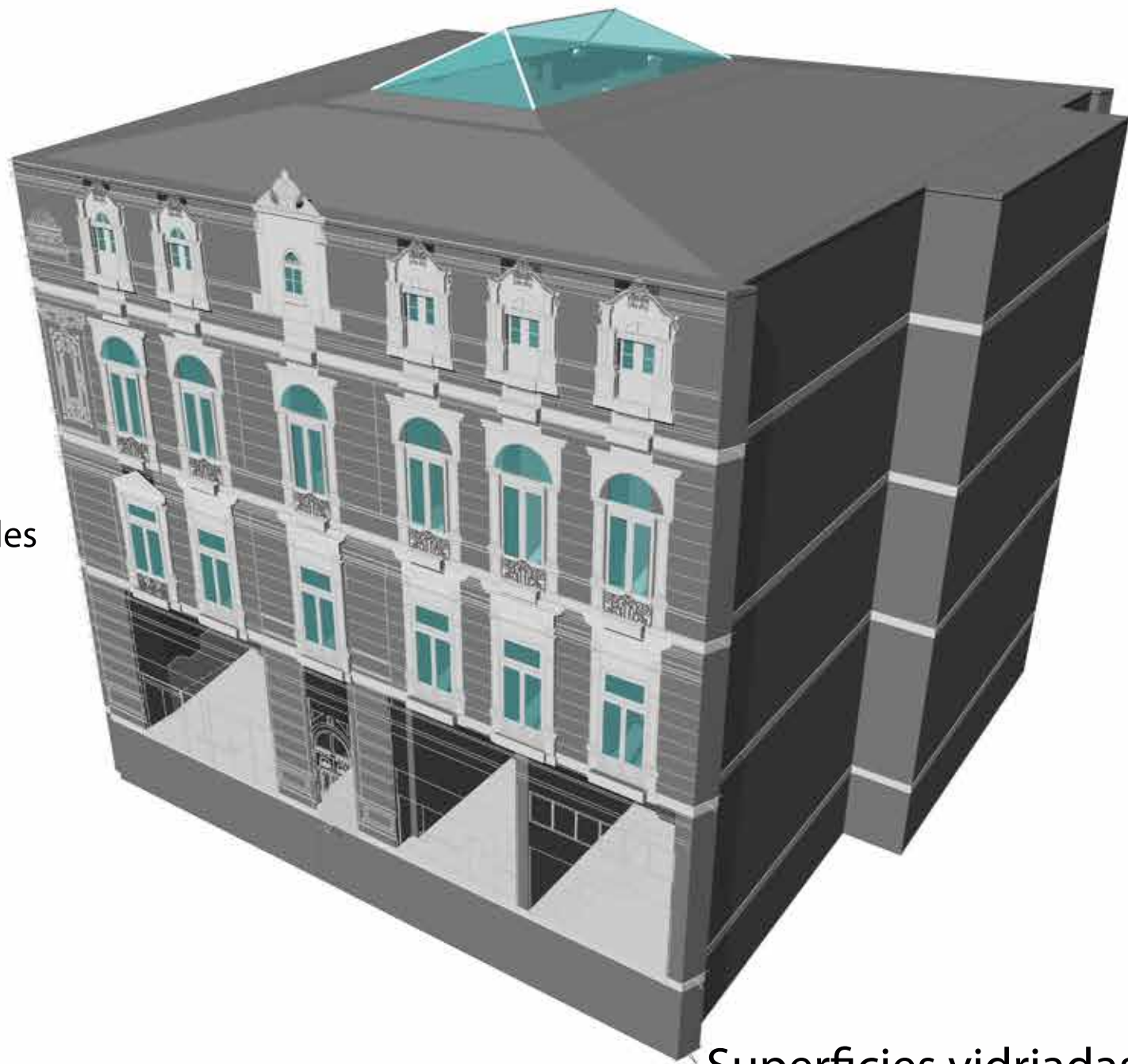
Area de planta: 2,3Mt2

Area total: 13,8 (contando 6 niveles desde el subsuelo)

Area sala de máquinas: 15Mt2.

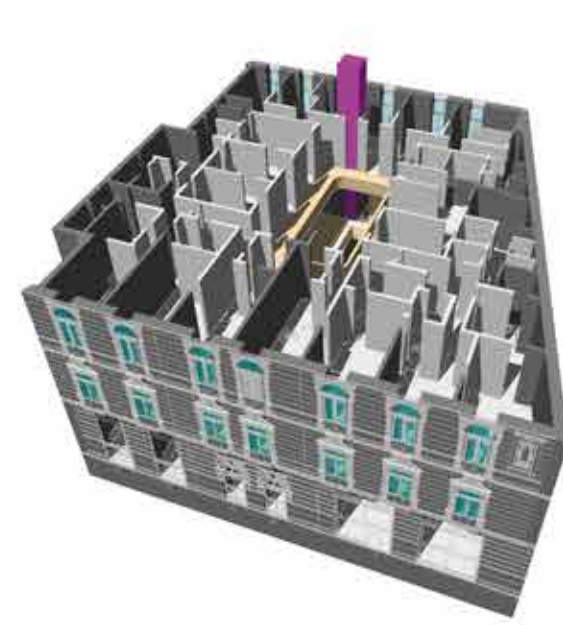
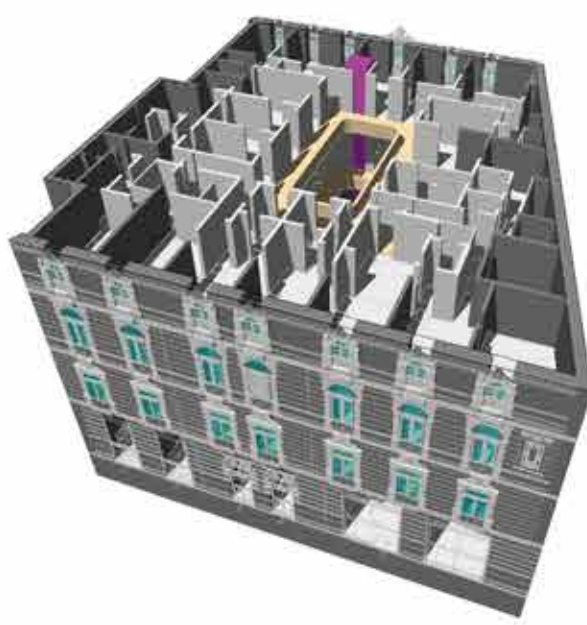
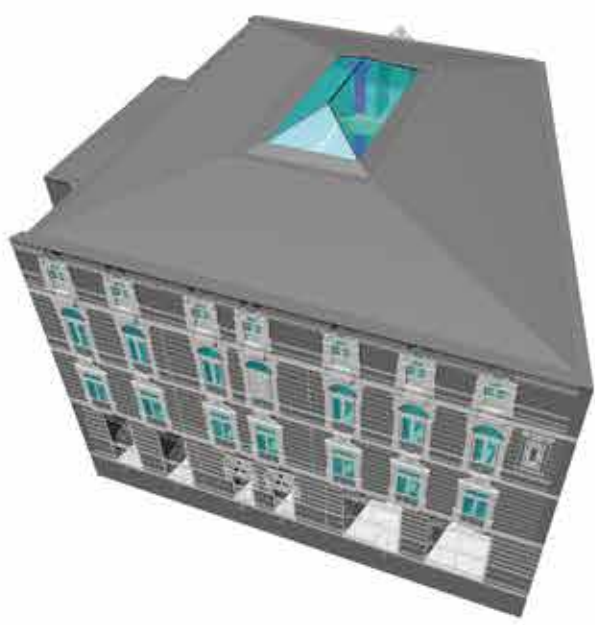


Situación actual salón: 179Mt2 vs. Situación proyectada: 332Mt2



Superficies vidriadas centro cultural: 58,2 Mt2. En total

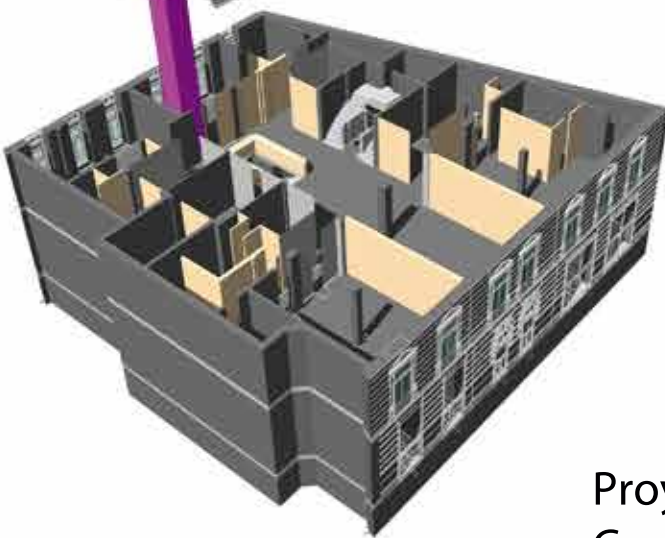
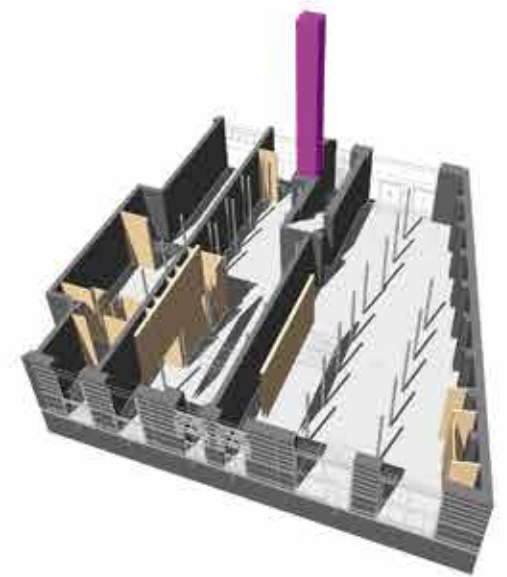
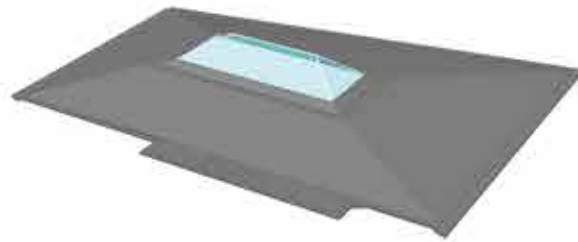
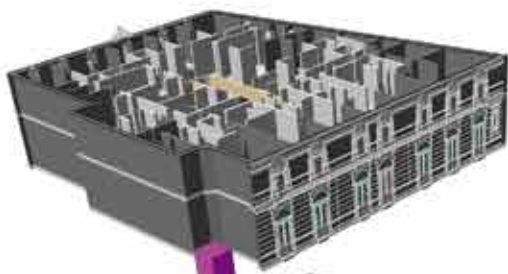
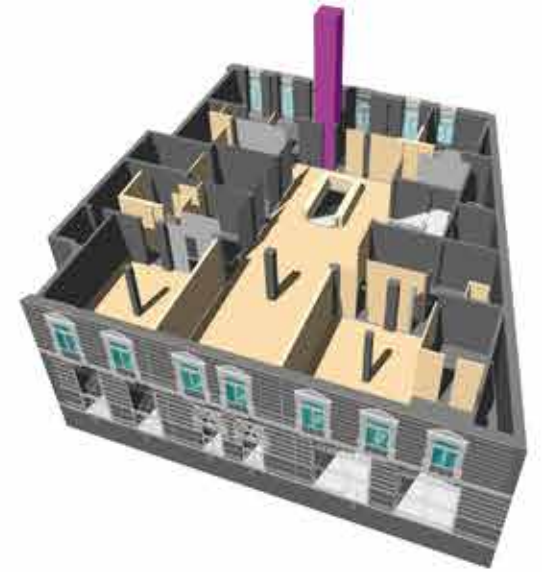




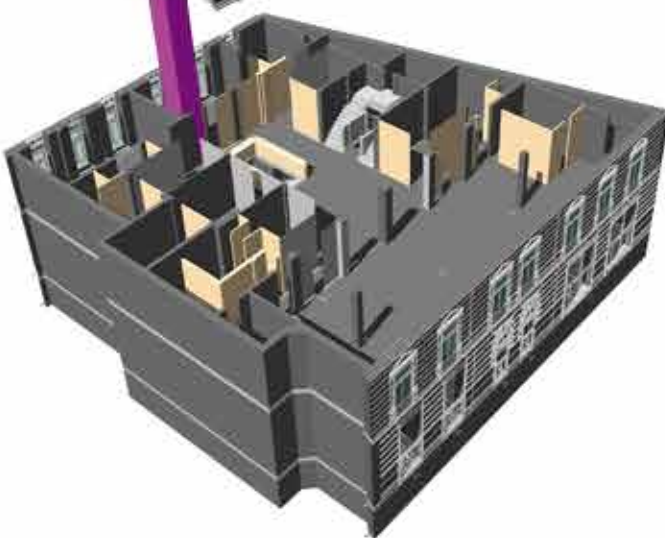
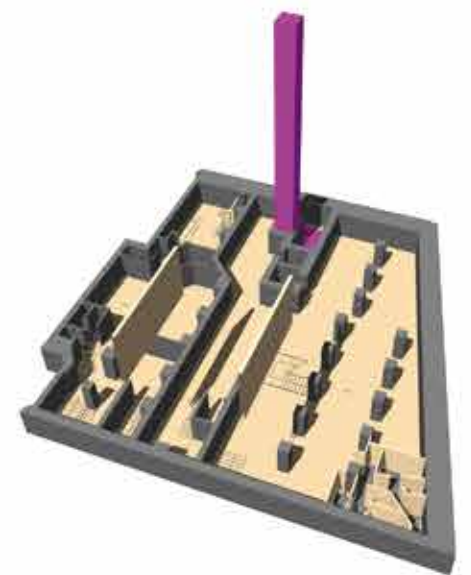
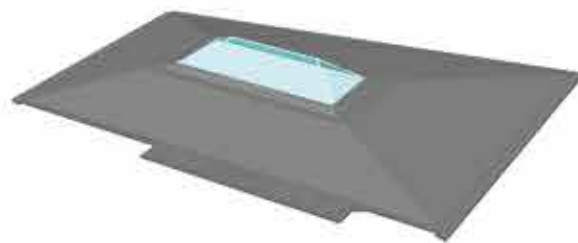
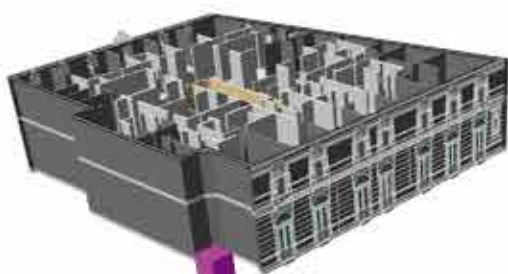
Cuarto nivel:  
Superficies de pasillo: 83mt<sup>2</sup>  
Superficie recintos: 597mt<sup>2</sup>

Tercer nivel:  
Superficie de pasillo: 83mt<sup>2</sup>  
Superfici de recintos: 597mt<sup>2</sup>

Nivel Salón:  
Superficie pasillo: 131mt<sup>2</sup>  
Superfici recintos: 578mt<sup>2</sup>



Proyección del salón:  
Crece 153 mt<sup>2</sup>  
pasa de 179mt<sup>2</sup> a 332mt<sup>2</sup>



CUBIERTA:  
CONTEMPLA 70 MT<sup>2</sup> DE SUPERFICIES VIDRIADAS